

LITTLE LEARNERS DAY NURSERY

NURTURING TINY HEARTS AND MINDS



LLDN@hotmail.co.uk



0161 865 3803



57 Edge Lane | Stretford | M32 8PA



Nursery Manager: Katie Brennan
Deputy Manager: Selina Blatch Ward

Welcome to Little Learners Day Nursery

We understand that choosing the right nursery for you and your child is an important—and often difficult—decision. With this in mind, our aim is to provide the highest quality care and early education in a safe, nurturing, and engaging environment.

This prospectus offers an introduction to Little Learners Day Nursery: our routines, our approach to supporting your child's learning and development, and how we work in partnership with you to meet your child's individual needs. We focus on discovering and nurturing each child's unique interests and strengths.

At Little Learners, we believe that play is a natural and instinctive way for children to explore, investigate, and make sense of the world around them. Our calm, welcoming spaces are carefully designed to encourage curiosity and creativity while ensuring children feel safe, supported, and happy.

Our dedicated and enthusiastic staff are committed to every child's development. As children progress through the nursery and prepare for pre-school, we ensure they are confident, capable, and ready for their next steps in education.

We value strong partnerships with parents and carers and believe that working closely together creates the best outcomes for children. Our extensive settling-in process helps build trust and emotional security from the very beginning, creating a strong foundation for your child's journey with us.

We hope this prospectus provides you with a clear insight into what we offer for children and families, along with useful information to support you in making the best choice for your childcare needs.



About Us

Our nursery is housed in a large, detached building set within spacious grounds, offering a safe and stimulating environment for children to learn and play. We operate across nine spacious rooms spread over three floors, each carefully resourced to meet the developmental needs of children at different ages. All resources are placed at children's eye level, allowing them to explore independently and follow their current interests. This setup encourages children to become early creative thinkers and confident learners.



Opening Times and Registration

Little Learners Day Nursery is open 51 weeks of the year, closing only for Public Holidays and one week over Christmas and New Year. Our daily opening hours are Monday to Friday, from 7:30 am to 6:00 pm.

We hold three training days annually, scheduled during the week, and families receive ample notice to plan accordingly.

The nursery is registered to care for up to 94 children, ranging in age from six months to five years. We offer both full-time and part-time childcare options to accommodate family needs.

About Us

Established for over 20 years, Little Learners Day Nursery serves families in the Stretford and Chorlton areas. We are proud to be registered with Ofsted and the National Day Nurseries Association (NDNA), and we work closely with the Local Authority to maintain the highest standards of care.

Our curriculum follows the Early Years Foundation Stage (EYFS) framework and the latest Development Matters guidance (updated September 2023), ensuring your child receives a high-quality early education.

Security and Facilities

Security is a top priority at Little Learners. We have CCTV coverage both inside and outside the nursery, allowing us to monitor the premises and use footage within nursery rooms solely for staff training purposes.

To make drop-off and pick-up easier, our front entrance is equipped with an efficient face scanner, allowing parents independent access.

The nursery is easily accessible, with a spacious car park at the front and a staff car park at the rear that also serves as overflow parking for parents.

For families who choose to walk, we provide secure covered storage for prams, pushchairs, and car seats.



Settling into Nursery



Partnership with Parents & Settling-In Process

At Little Learners, we pride ourselves on building strong partnerships with parents. We understand that leaving your child at nursery for the first time can be an emotional experience for both you and your child, and we are here to make the transition as smooth and reassuring as possible.

Once you have decided that Little Learners Day Nursery is the right place for your family and have completed the enrolment form provided during your visit, our dedicated nursery administrator, Alicia, will confirm your child's place.

Your child's settling-in visits will begin before their official start date. These visits typically start with one hour and gradually increase to a full day, but if you feel your child is settling well sooner, fewer visits can be arranged. A typical settling-in schedule might look like this:

Week 1

- Day 1: 9:30 am – 10:30 am (includes paperwork with your child's key person)
- Day 2: 9:30 am – 10:30 am
- Day 3: 9:30 am – 11:30 am

Week 2

- Day 4: 9:30 am – 12:30 pm
- Day 5: 9:30 am – 2:30 pm
- Day 6: 9:30 am – 4:00 pm

Your child's official start date will be agreed upon as part of this process.

Please note that all settling-in sessions are free of charge, allowing your child to adjust comfortably without any financial commitment during this important transition period.

Our main aim is to ensure your child settles comfortably and confidently into their new environment, preparing them and you for a smooth return to work.

You will be supported by our trusted leadership team: Katie Brennan, Nursery Manager; Selina Blatchward, Deputy Manager; and Alicia Jackson, Administrator.

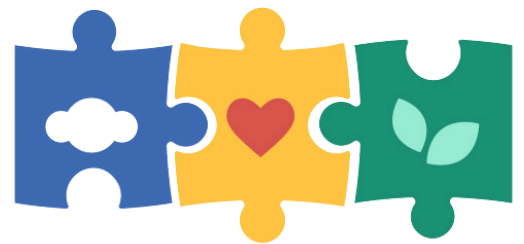
Clothing and Property

Clothing and Supplies

Please ensure that all your child's clothing is clearly labelled with their name. This helps us make sure that all personal belongings are returned to the correct child at the end of each day. This labelling also applies to nappies, wipes, and bottles before bringing them into the nursery.

Parents of children who wear nappies are asked to provide enough nappies, creams, and wipes to last for the day. Alternatively, you may bring nappies in bulk to last several weeks; these will be stored securely in your child's room. We will always give you sufficient notice when more supplies are needed.

Formula milk should be brought into the nursery unopened and in its original packaging. Staff will open and prepare the milk as required during the day. Please provide enough clearly labelled bottles for daily use. All bottles will be sent home at the end of each day to be sterilised and prepared for the next day.



Our Nursery Rooms

Little Learners Babies

The Baby Unit

Our baby unit consists of two rooms that create a warm and cosy environment where your little one can safely begin to explore their surroundings. As your baby grows and develops, their day will be filled with engaging activities and opportunities. A variety of resources are placed at child level to encourage independence and allow them to make their own choices.

Children in our baby unit have access to a malleable play area where they are encouraged to mix playdough each morning, adding scents, herbs, and colors to engage their senses and creativity.

We believe every child should have the freedom to make their own learning choices, fostering creative development. Our accessible paint station allows children to explore early mark-making and express themselves through art.

We recognise that each child is unique, and our practitioners understand the vital role parents play as their child's primary caregivers. Every child in the baby unit is assigned a dedicated key person—someone your child feels comfortable with. This key person will maintain close communication with parents, answering questions and discussing your child's care and development.

The key person will build a strong relationship with both you and your child, beginning during the settling-in visits to help your child feel secure in their new environment and routine.

Throughout the day, practitioners record your child's daily activities using the Famly app. This includes bottle feeds, meals, nappy changes, sleep times and durations, as well as observations of your child's engagement and learning through activities. Famly also enables direct communication between parents and practitioners, ensuring transparency and fostering a true partnership.

At the end of each day, a full, detailed, face-to-face handover is provided when you collect your child, giving you peace of mind and the opportunity to discuss any questions or observations.





Little Learners Toddlers

Babies grow into toddlers very quickly, reaching exciting new milestones as they develop a range of newfound skills. Our toddler rooms are thoughtfully equipped with resources designed to support and nurture these rapidly developing abilities.

As toddlers begin to make sense of the world around them, their natural curiosity drives them to explore, discover, and engage with new and exciting experiences every day.

Our toddler rooms are designed to accommodate smaller groups, creating a warm and secure environment where children can feel happy and begin to develop important peer relationships.

Resources are easily accessible, providing endless play opportunities across the seven areas of learning. By supporting social interaction and offering small group activities, children can play, talk, and learn while practitioners observe and support their development.

Play happens both indoors and outdoors. With our spacious garden, children have the freedom to express themselves openly and independently. Practitioners guide them as they explore their physical and emotional capabilities, encouraging them to push their limits, take turns, and embrace healthy risks.

Mealtimes are relaxed social occasions where children develop good table manners and enjoy sharing time together.



Little Learners Pre-school

As your child grows, so do their needs. Our aim is to support the learning and development of each individual by providing a consistent, balanced, broad, stimulating, and differentiated curriculum. To achieve this, our practitioners work closely alongside parents, fostering a strong partnership to support your child's progress.

Children have a natural desire to learn, and our pre-school rooms provide a secure and respectful environment where children develop respect for themselves and others. Through a variety of play experiences, children are encouraged to be creative thinkers and to choose independent activities across the seven areas of learning.

Pre-schoolers have the opportunity to build on their existing knowledge, gather information, investigate, and use their own ideas and concepts. In doing so, they begin to develop important skills such as classifying, organising, and applying knowledge to everyday tasks.

At Little Learners, we focus on learning through play and exploration, with supportive guidance from practitioners. We encourage children to develop their imaginations and become active decision-makers. Our stimulating experiences foster creativity and critical thinking, balancing adult-led and child-initiated learning.

As a culturally diverse early years setting, we celebrate and reflect each child's cultural background through carefully selected resources, literature, home links, and celebrations. Our practitioners listen and respond attentively, creating an inclusive environment where every child's voice is valued and their knowledge embraced.



Healthy Setting



At Little Learners we believe that mealtimes should be happy, social occasions for children and staff alike. We promote shared, enjoyable positive interactions at these times.

We are committed to offering children healthy, nutritious, and balanced meals and snacks, which meet individual needs and requirements.

The children are offered a balanced and healthy choice of breakfast, midday meal, tea and two daily snacks which are provided for children attending a full day at the nursery.

Menus are planned and in line with guidance produced by the Department of Education, these are rotated over a four-week basis and will reflect cultural diversity and variation.

Only milk and water are provided as drinks to promote oral health. Fresh drinking water is always available and accessible.

We respect all individual dietary requirements, preferences, and food allergies that a child may have and any special health requirements. We will give careful consideration to seating to avoid cross contamination.

Mealtimes and Weaning

Mealtimes are supervised at all times, practitioners will support children with their individual feeding needs.

Breakfast is offered to the children between the hours of 7.30am – 8.30am, the children will have a choice of two cereals.

Lunch time is served at 11.30am, this will be a warm nutritional meal for the children followed by a pudding.

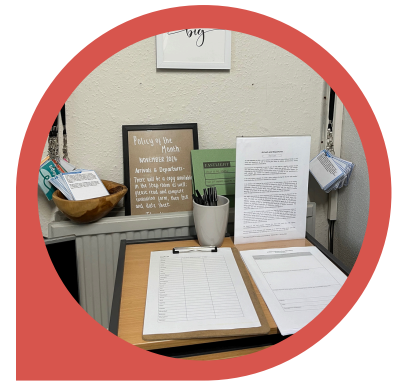
Teatime will be served at 3.30pm.

We support and encourage children who are not confident feeding themselves, baby led weaning is encouraged so that the children can experience different textures and tastes of food and learn how to grasp a spoon. We will help the children along this journey and practitioners are also a support network for parents.

Dietary requirements are adhered to, to meet cultural, medical, and parental wishes.



Safeguarding & Child protection



At Little Learners Day Nursery, we work closely with children, parents, external agencies, and the wider community to ensure the welfare and safety of every child in our care. We believe every child has the right to be treated with respect, to thrive, and to be protected from all forms of abuse.

We are committed to supporting children, protecting them from maltreatment, and have robust procedures in place to prevent any impairment to their health and development. Our setting also actively works to safeguard children from the risk of radicalisation and promotes acceptance and tolerance of different beliefs and cultures.

We have designated safeguarding leads (DSLs) within the nursery who are responsible for coordinating child protection and welfare matters. At least one DSL is on duty at all times during opening hours. These leads receive comprehensive safeguarding training at least every two years and update their knowledge regularly, with at least one annual refresher.

Our safeguarding leads liaise closely with the local authority children's social care team, undertake specialised child protection training, and stay informed about the latest developments in safeguarding. They also provide ongoing support and training to the nursery staff to ensure everyone remains vigilant and informed.

To maintain safety and privacy, the nursery operates a strict no mobile phone policy for staff. Mobile phones must be stored in lockers during working hours and can only be used during designated breaks. Parents are also not permitted to use mobile phones or cameras within the nursery premises.

Additionally, fixed CCTV cameras are installed around the nursery, both indoors and outdoors—excluding toilets and changing areas to protect children's dignity. The CCTV system is used solely to promote the health and safety of children, staff, and visitors, and to protect the nursery building and resources.



Designated Safeguarding Leads (DSLs)

Our Designated Safeguarding Leads at Little Learners are:

Katie Brennan, Nursery Manager
Selina Blatchward, Deputy Manager
Sarah Maciulskas, Primroses Room Leader

These experienced professionals are responsible for coordinating all safeguarding and child protection matters within the nursery.

Special Educational Needs and Disabilities (SEND)



Inclusion

At Little Learners, we are committed to the inclusion of all children within our setting. We ensure every child is cared for and supported to develop to their full potential alongside their peers through positive and shared experiences. We provide opportunities for children to learn from each other in a welcoming and supportive environment.

We recognise that each child's needs are unique, and we do not categorise children. Instead, we focus on supporting each individual according to their specific needs, ensuring no child faces discrimination or disadvantage.

Partnership with parents is central to our approach. We work closely with families to meet each child's individual needs and help them reach their full potential. We are dedicated to supporting children with special educational needs and/or disabilities by making reasonable adjustments to enable all children to fully access our nursery's facilities.

Every child has the right to a broad and balanced early learning environment, and we strive to provide this for all children in our care.

Early Years Foundation Stage



The Early Years Foundation Stage (EYFS) sets the standards for learning, care, and development for children from birth to five years old. It ensures that children learn, develop, and are kept healthy and safe in their early years.

The EYFS is structured around seven interconnected areas of learning and development that support children's growth and help them thrive.

The three prime areas are the foundation for sparking children's curiosity, enthusiasm for learning, relationship-building, and overall development. These prime areas are:

- Communication and Language
- Physical Development
- Personal, Social and Emotional Development

The specific areas build on the prime areas and complete the whole seven areas of learning:

- Literacy
- Mathematics
- Expressive Arts and Design
- Understanding the World

At Little Learners Day Nursery, our practitioners plan individual learning experiences based on your child's interests. We provide challenging and stimulating activities that encourage exploration and investigation through a balance of adult-led and child-led learning.

During your child's time with us, they will be assigned a key person who will support you and your child's learning and development every step of the way.